

Restoring Magnia SG20 image 2.6 using TrueImage In Windows XP

By Jason Alday. Jason_J_A@msn.com

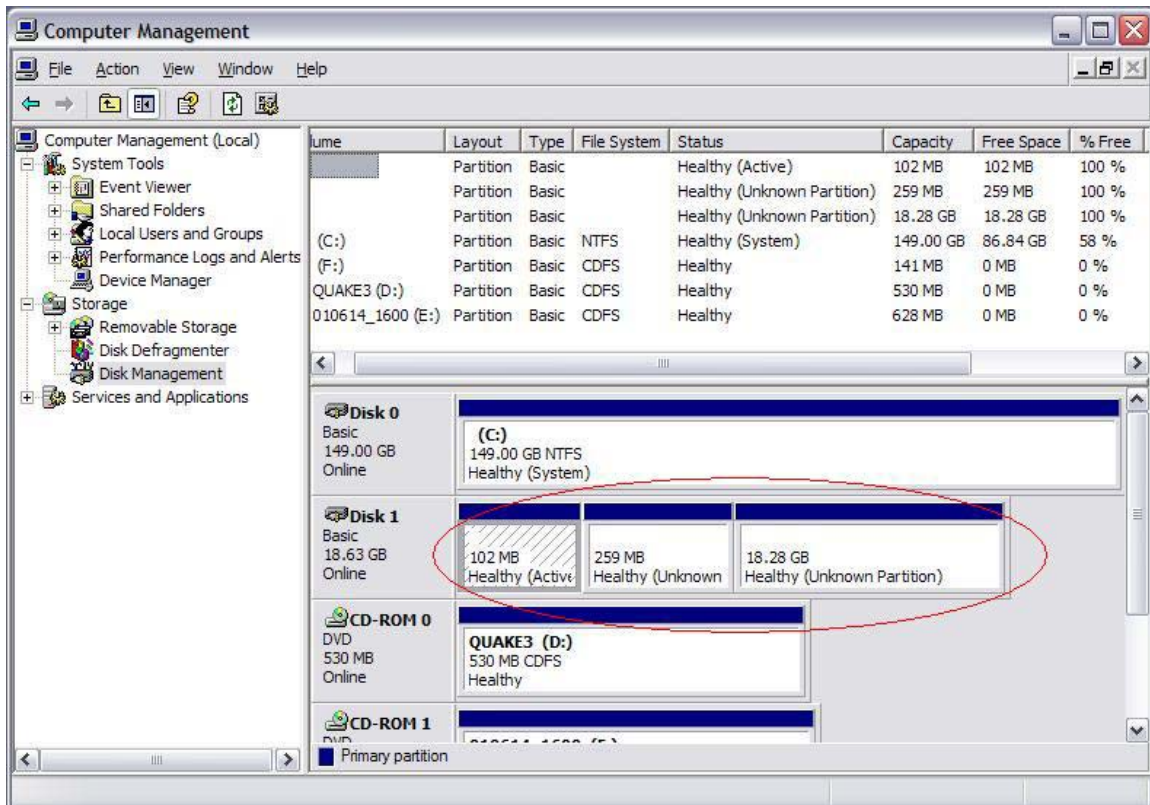
First off you will need the image file (tib file) and the notebook (2.5") drive at least 20gb or larger in size. You will also need to be able to hook the notebook drive to your PC. To do this I suggest either getting a 2.5" to 3.5" IDE adapter or a USB1/2 or Firewire enclosure. I use a USB 2.0 enclosure and can restore the 2.6 image in under 1 minute without opening my PC, very easy.

Step 1.

Hook up your drive to your PC and boot XP as normal.

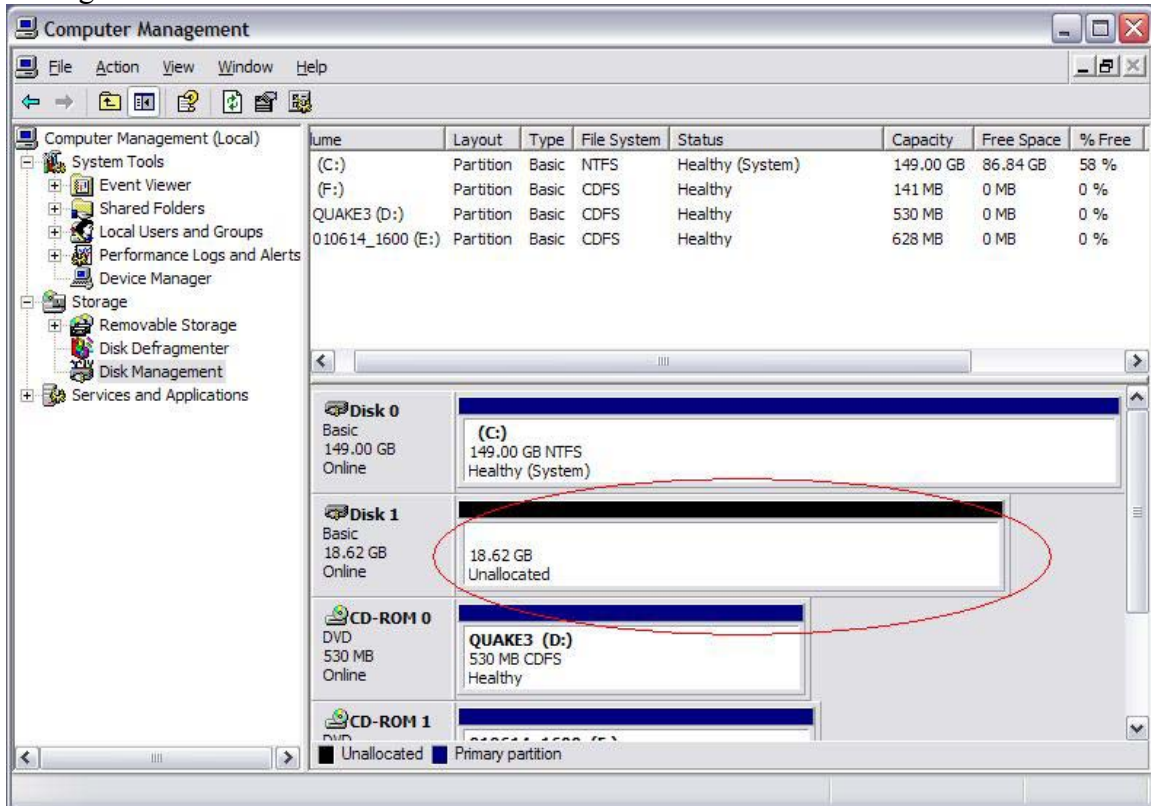
Step 2.

Open the Control Panel > Administrative Tools > Computer Management tools. When it opens select the Disk Management portion under Storage on the left side. You should see your disk listed there similar to something like below (in the red circle).



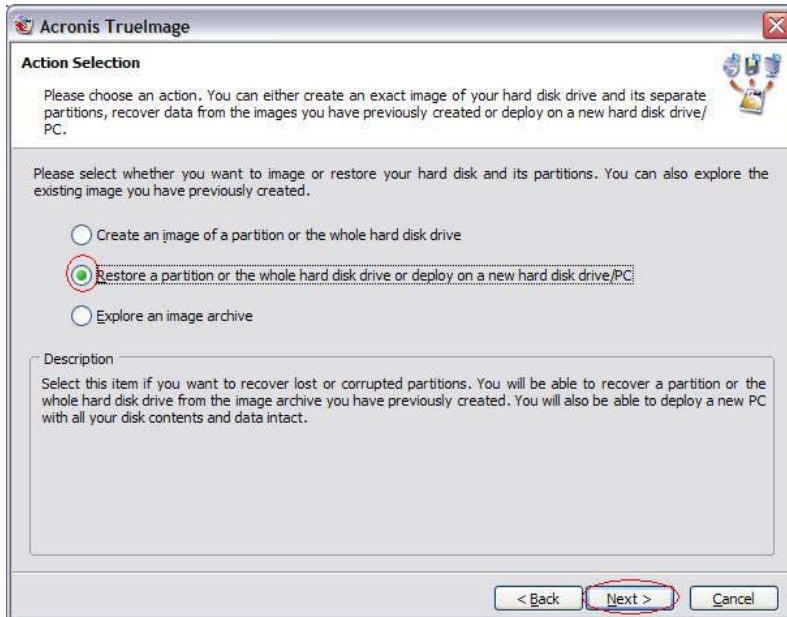
Step 3.

Right click on each of the partitions and pick delete partition or delete logical drive. If the delete logical drive option is there you will first need to do this and then repeat and select the the delete partition option the 2nd time. When you are done the drive you be completely black and labeled with “Unallocated” like below in red. Close Computer Management now.



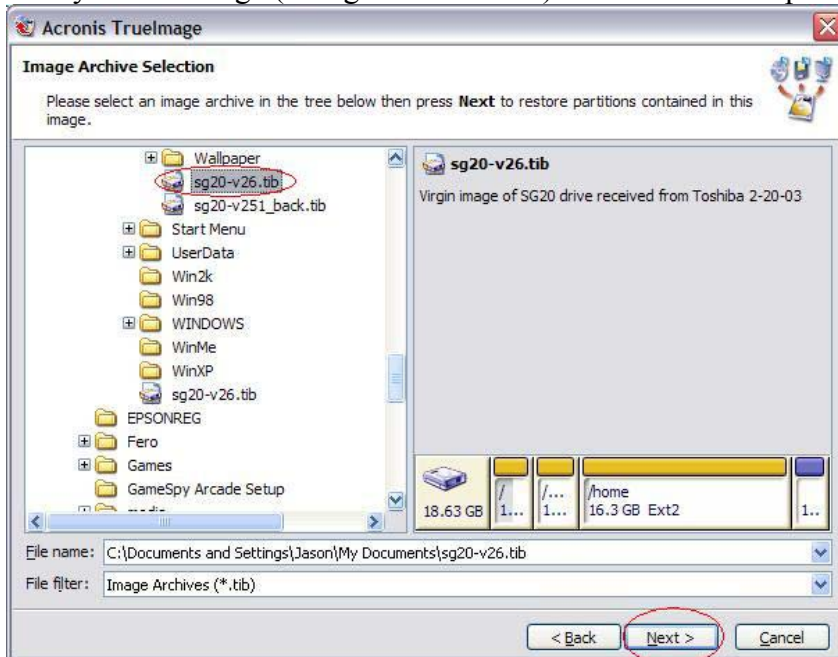
Step 4.

Your drive is now clean of all partitions and is ready to be restored to. Launch TrueImage and pick the “Restore a partition or whole disk...” option then Next.



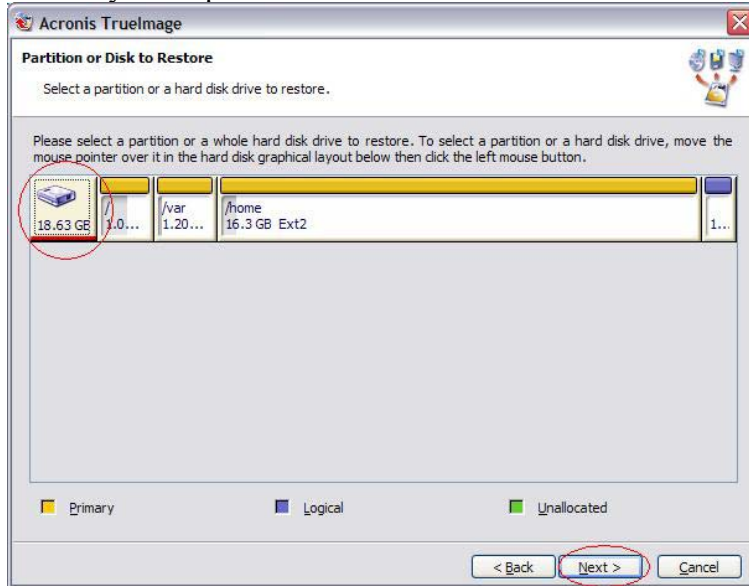
Step 5.

Find your 2.6 image (the sg20-v26.tib file) and select it then pick Next



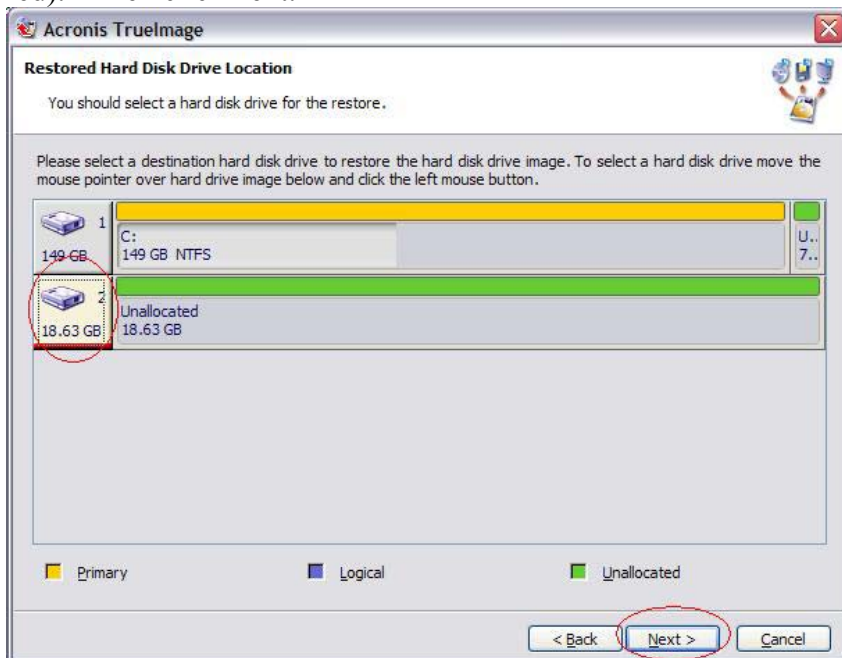
Step 6.

Select the entire disk as the Restore option. You do this by clicking on the whole disk icon which is shown in the red circle in the picture below. It will underline in red to indicate you've picked the whole drive. Then click Next.



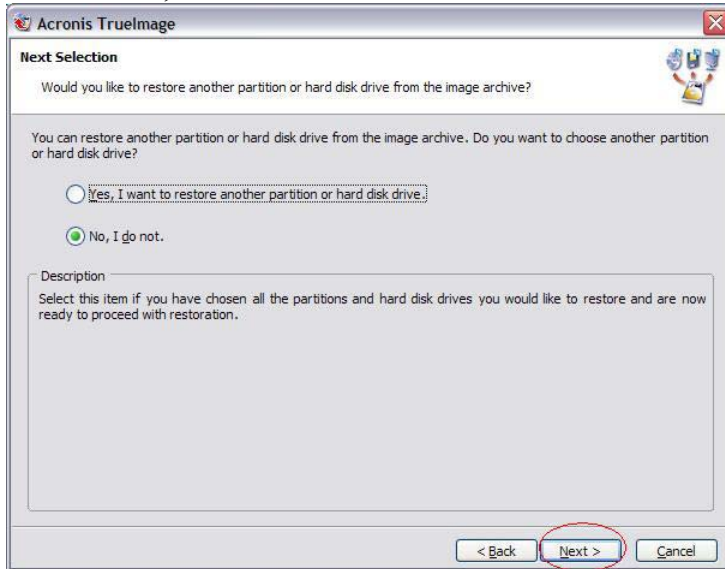
Step 7.

Select the hard disk to restore to, note this disk must be free of all partitions and must say "Unallocated" in order for it to allow you to select the entire disk icon (again circled in red). Then click next.



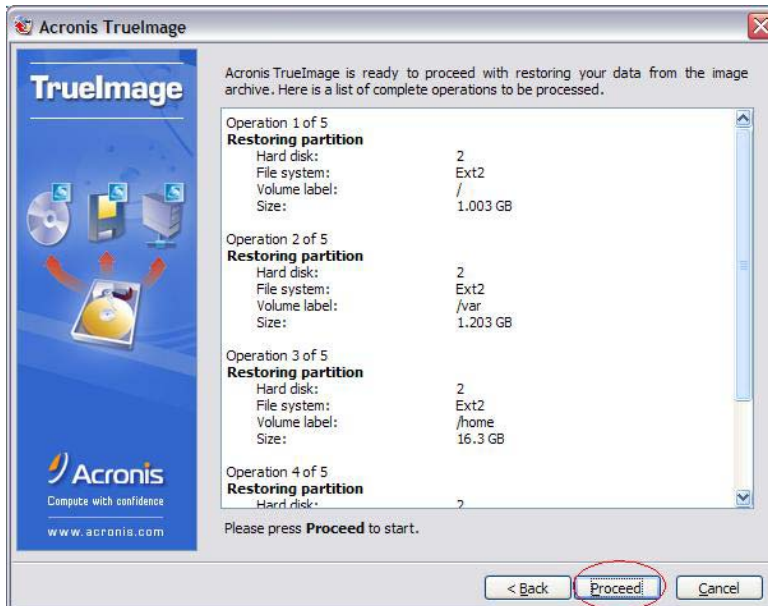
Step 8.

Choose “No, I do Not” Then click Next.



Step 9.

Click “Proceed” to start



Step 10.

Wait for it to finish, this will take a minute or so for IDE or USB2 connections. USB 1.0 can take up to an hour. You may get a warning about being unable to synchronize with system, it's okay... just say ignore it. You're done, install into the Magnia and test.

